

FROSTIE SERIES 2017



Kindly sponsored by

Date: Saturday 23 & 30 September, 7th, 14th & 22nd October 2017

SAILING INSTRUCTIONS

1. RULES

The Series will be governed by the ISAF Racing Rules of Sailing ("RRS"), the Prescriptions of the RYA and the Notice of Race (save as any of these are changed by these sailing instructions).

2. CHANGES TO SAILING INSTRUCTIONS

Any change to the sailing instructions will be posted on the sailing notice board at Strangford Lough Yacht Club ("SLYC") no later than 1200 hours and transmitted on VHF Ch 37 at 1300 on the day that it will take effect.

3. CLASSES AND CLASS FLAGS

3.1 The classes and class flags will be as follows:

<u>Class</u>	<u>Division</u>	<u>Class Flag</u>
IRC1	All IRC	Numeral 1
NHCRS	All 2 Sail	Numeral 7
NHC1	As per SLRA list	Numeral 4
NHC2	As per SLRA list	Numeral 5
Sonata	One Design	Numeral 6
Elite	One Design	Code Flag E

3.2 All boats shall display on their backstay a numeral pennant (as in 3.1 above) to indicate their class. Boats failing to meet this instruction may not be counted as starters.

4. SCHEDULE OF RACES

4.1 Two races are planned each day on 23 & 30 September and on 7, 14 and 21 October.

4.2 The scheduled time of the starting signal for the first race of each class shall be as follows:

<u>Class</u>	<u>Starting signal</u>
NHCRS	13:36
NHC2	13:39
Sonata	13:42
NHC1	13:45
RS Elite	13:48
IRC1	13:51

4.3 The same starting sequence will be used for second race which will start as soon as practicable after the first race has finished. The postponement signal (AP) may be displayed to alert boats that the second race will begin soon.

5 RACING AREA AND COURSE MARKS

- 5.1 Appendix A shows the racing area and racing marks, which may be used as course marks. The intended positions of the racing marks are shown in Appendix B.
- 5.2 Course marks are designated by a letter or number. Mark O is an orange inflatable buoy. Marks 1 to 5 and Q, R & T are large yellow buoys. Marks A to M are orange pipe marks.

6. HAZARD MARKS

- 6.1 In the racing area there are a number of rocks and pladdies marked by black pipe marks.
- 6.2 These are not marks of the course, but competitors are advised to familiarize themselves with their location. The intended positions of the hazard marks are shown in Appendix B.

7. COURSES

- 7.1 Courses will be displayed on a course frame at the SLYC Battery, on the north end of Trasnagh Island.
- 7.2 Courses for NHCRS will be displayed on the top row of the course frame.
- 7.3 Courses for the IRC1, NHC1, NHC2, Sonata and RS Elite classes will be displayed on the bottom row of the course frame.
- 7.4 Course marks displayed in white on a black background are to be left to starboard and course marks displayed in red on a white background are to be left to port.

8. THE START

- 8.1 The starting line will be between the mast at the SLYC Battery and mark O.
- 8.2 RRS 26 shall not apply. Start times and signals will be made at three minute intervals.
- 8.3 **For the first starting class only** the raising of the class flag shall be a 6 minute warning signal. 3 minutes before the first class start the Preparatory flag will be raised. For the remaining classes the raising of the class flag shall be the 3 minute warning signal for that classes start.
- 8.4 In the event of a general recall for a fleet, that fleet will start 3 minutes after the starting signal of the last fleet scheduled to race or the starting signal of the immediately preceding fleet subject to general recall if more than one fleet has been recalled. This changes RRS 29.2.
- 8.5 A boat whose warning signal has not been made shall avoid the starting area.

9. THE FINISH

The finishing line will be between the mast at the SLYC Battery and mark O, which may not be in the same position as at the start.

10. HANDICAPS

Starting handicaps for all NHC classes will be taken from the Strangford Lough Regattas Conference list.

11. TIME LIMITS

11.1 The time limit for the first boat in each class to finish shall be 90 minutes after the time of the start of that boat's class.

11.2 RRS 35 and 63.1 are changed so that boats failing to finish within 20 minutes after the first boat in their class finishes will be scored Did Not Finish (DNF).

12. PROTESTS

Protests shall be delivered to the Race Office no later than 60 minutes after the last boat finishes the last race of the day. Protest Forms are available from the Race Office.

13. SCORING

The Low Point scoring system, RRS Appendix A, changed to allow discards as follows, will apply.

Races completed	1 to 5	no discards
Races completed	6, 7 or 8	1 discard
Races completed	9 or 10	2 discards

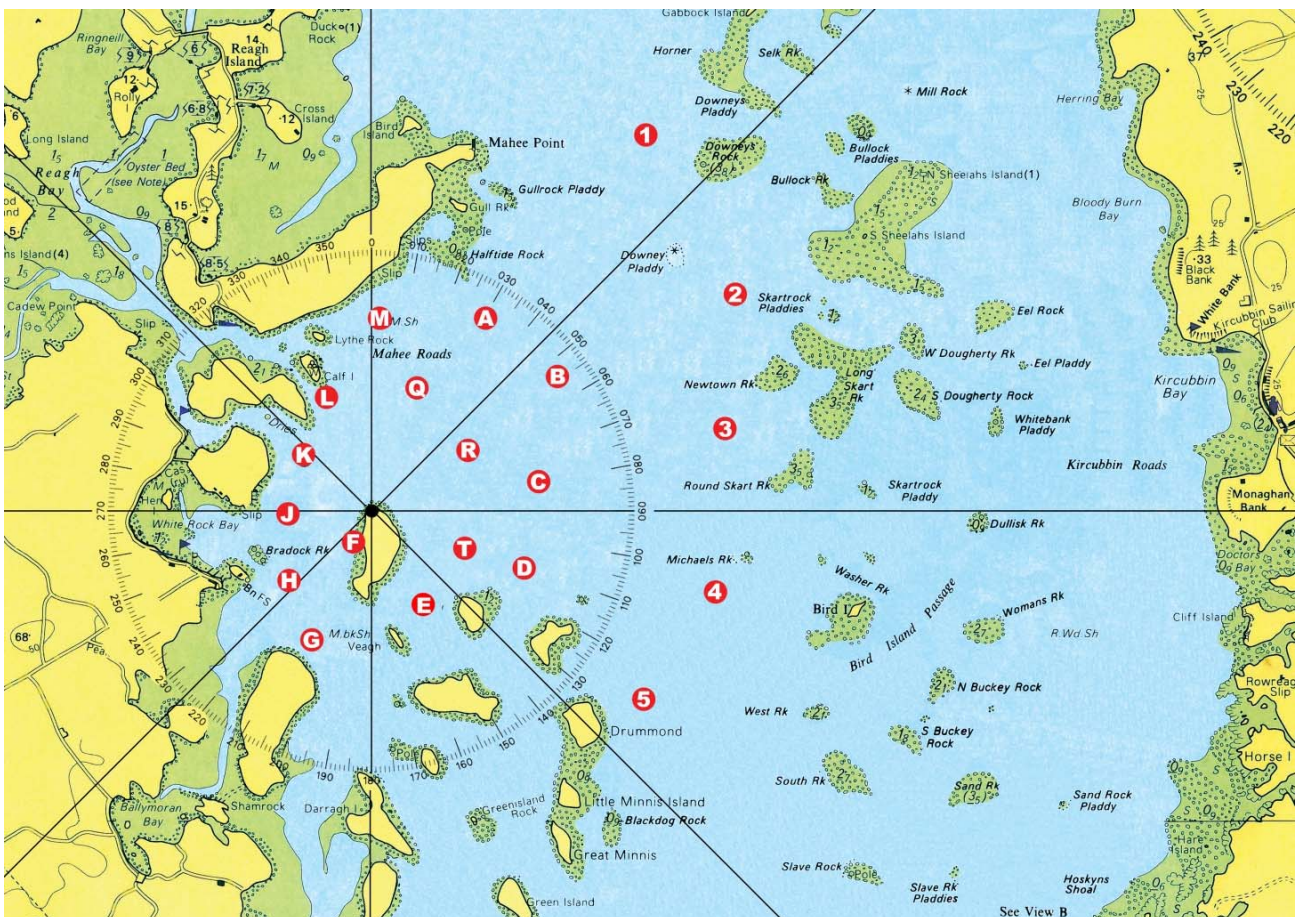
14. SAFETY REGULATIONS

A boat that retires from a race shall inform the Battery (Channel 37) at the earliest opportunity.

15. DISCLAIMER OF LIABILITY

Competitors participate in the Series entirely at their own risk. See RRS 4, Decision to Race. SLYC, its Officers and Agents, will not accept any liability for material damage or personal injury or death sustained in conjunction with or prior to, during, or after the Series.

Illustration of Racing Mark positions.



GPS Positions of Rock Marks and Racing Marks

The following is the intended position of the rock and racing marks at SLYC. No liability whatsoever will be accepted for marks which are out of position or missing.

Racing Marks	Rock Marks
Mark 1 54° 30.45' 5° 36.00'	Half Tide Rock (S) 54° 29.90' 5° 37.10'
Mark 2 54° 29.87' 5° 35.51'	Gullrock Pladdy (S) 54° 30.23' 5° 36.66'
Mark 3 54° 29.345' 5° 35.657'	Downey Pladdy (N) 54° 30.10' 5° 35.80'
Mark 4 54° 28.80' 5° 35.55'	Downey Pladdy (E) 54° 30.00' 5° 35.70'
Mark 5 54° 28.45' 5° 36.00'	Downey Pladdy (S) 54° 29.95' 5° 35.80'
Mark A 54° 29.80' 5° 37.10'	Downey Pladdy (W) 54° 30.05' 5° 35.90'
Mark B 54° 29.58' 5° 36.55'	Downey Rock (W) 54° 30.30' 5° 35.75'
Mark C 54° 29.22' 5° 36.68'	Newton Rock (W) 54° 29.50' 5° 35.40'
Mark D 54° 28.90' 5° 36.75'	West Rock (W) 54° 28.40' 5° 35.10'
Mark E 54° 28.80' 5° 37.38'	South Rock (W) 54° 28.10' 5° 34.90'
Mark F 54° 28.95' 5° 37.82'	Slave Rock (W) 54° 27.80' 5° 34.80'
Mark G 54° 28.64' 5° 38.06'	Tip Reef (W) 54° 27.55' 5° 34.55'
Mark H 54° 28.84' 5° 38.20'	Braddock Rock (S) 54° 28.89' 5° 38.30'
Mark J 54° 29.10' 5° 38.20'	Isolated Danger Mark
Mark K 54° 29.28' 5° 38.10'	East of Parton 54° 28.15' 5° 37.00'
Mark L 54° 29.50' 5° 38.05'	
Mark M 54° 29.80' 5° 37.63'	
Mark Q 54° 29.53' 5° 37.50'	
Mark R 54° 29.29' 5° 37.08'	
Mark T 54° 29.04' 5° 37.00'	